

WEBVIEW PATIENT PORTAL

The **WEBVIEW** patient portal is used to view a patient's chart information and to view and/or send non-urgent messages to and from the health care provider team at **Mountain View Family Practice, PC**.

To sign up for **WEBVIEW**, please contact the office at **(978) 939-2133**.

Check us out:

Mountain View Family Practice Online

www.mountainviewfamilypracticepc.com/

LIKE US on FACEBOOK:



**Mountain View
Family Practice, PC**



**Welcome
to
Mountain View
Family Practice**




Mountain View Family Practice, P.C.
570 Baldwinville Rd.
Baldwinville, MA 01436
978-939-2133

**Mountain View
Family Practice, PC**
570 Baldwinville Rd.
Baldwinville, MA 01436

Tel: 978-939-2133

Our Physicians



Gretchen Kelley, MD

Dr. Kelley graduated from the University of Massachusetts at Amherst in 1989 with a BA in Zoology. She graduated from the University of Massachusetts Medical School in Worcester in 1993. Her residency in Family Medicine was completed in 1996 at the University of Massachusetts Fitchburg Family Practice program. Dr. Kelley is Board Certified in Family Medicine.



Kelly Hoisington, DO

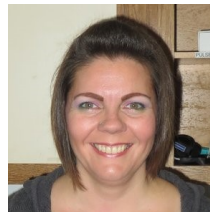
Dr. Hoisington graduated from the Michigan State University with a BS in Physiology in 1992. He received his DO degree from Des Moines University Osteopathic Medical Center. He completed his residency in Family Medicine at the St. John/Oakland Hospital in 2000. Dr. Hoisington is Board Certified in Family Medicine.

Our Nurse Practitioners



Melissa LaBonte, APRN-BC

Melissa "Missy" LaBonte, APRN-BC completed BS at Bridgewater State College Biology with a Minor in Chemistry. She completed her MS in Nursing, Adult Ambulatory Nurse Practitioner Specialty through the University of Massachusetts Worcester program. She is able to care for adults & adolescents 13 years & older.



Kelly Clow, DNP, FNP-BC

Kelly Clow, DNP, FNP-BC, RN completed her BS in Nursing at the University of Massachusetts in 2012. She obtained a doctorate in nursing practice with a focus of Family Nurse Practitioner from the University of Massachusetts at Amherst in 2016. Kelly Clow's interests include mental health, health promotion, obesity management and pediatrics. She is able to see patients of all ages.

Office Hours

Monday: 8:30 am—5:00 pm
Tuesday: 8:30 am—5:00 pm
Wednesday: 8:30 am—5:00 pm
Thursday: 8:30 am—5:00 pm
Friday: 8:30 am—5:00 pm
Saturday: CLOSED
Sunday: CLOSED

Medical Care After Hours:

If you have a medical emergency, always call 911 to get immediate help.

For non-emergent medical concerns after hours:

We participate in a call group with several other area clinicians for after hours coverage. If you need medical advice after hours, call the office and the answering service will page the on-call clinician.

Sick/Same Day Visits:

We provide same day/sick visits for our patients, subject to availability. If you or your family member require a same day visit, please call the office to schedule.

Routine Medical Care:

Well Child examinations are provided according to age appropriate schedules.

Annual Physicals are recommended for all patients.

Chronic medical problems: (High Blood Pressure, Diabetes, High Cholesterol, Heart Disease) require close attention and more frequent follow up, usually every 3-6 months.

Medication Refills:

Medications are refilled during regular office hours.

We strive to work with you to find the most affordable medication options for your medical conditions.

We have office policies for prescription of controlled substances (i.e. Narcotics, stimulants, benzodiazepines).

Insurance Participation:

We participate in many insurance plans. **COPAYMENTS are due at the time of service.** Please bring your insurance card(s) with you to every appointment and notify our staff of any insurance coverage changes.

Referrals:

Many insurances require a referral from your Primary Care Physician for appointments and services with specialists. We will work with you and your insurance provider to find an appropriate specialist covered by your insurance.

Please contact our office BEFORE you see a specialist to ensure referral is in place.

For Billing Questions:

Call 978-939-2133 during regular office hours.

Mountain View Family Practice, PC is committed to promoting the health and well-being of our patients by providing accessible, high-quality medical care for patients of all ages.