

# What to look for: ABCDEs of melanoma



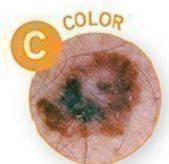
## **A = Asymmetry**

One half is unlike the other half.



## **B = Border**

An irregular, scalloped or poorly defined border.



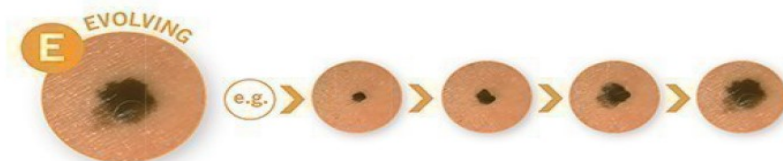
## **C = Color**

Is varied from one area to another; has shades of tan, brown or black, or is sometimes white, red, or blue.



## **D = Diameter**

Melanomas are usually greater than 6mm (the size of a pencil eraser) when diagnosed, but they can be smaller.



## **E = Evolving**

A mole or skin lesion that looks different from the rest or is changing in size, shape or color.